

# 2 Bedroom

Type B

58 sqm / 624 sqft

BLK 38  
#02-01 to #24-01  
#02-08 to #24-08\*

BLK 42  
#02-17 to #24-17  
#02-24 to #24-24\*

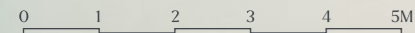
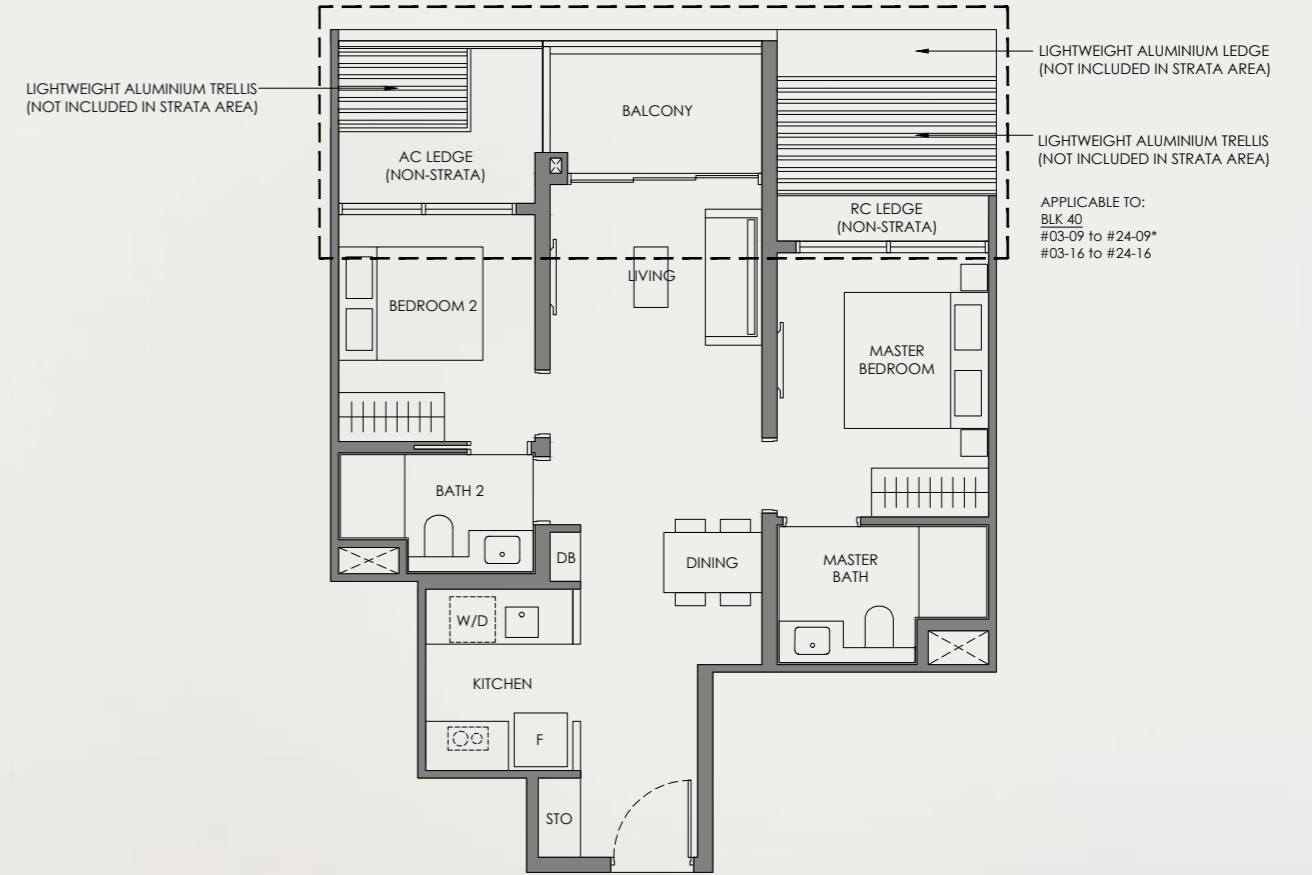
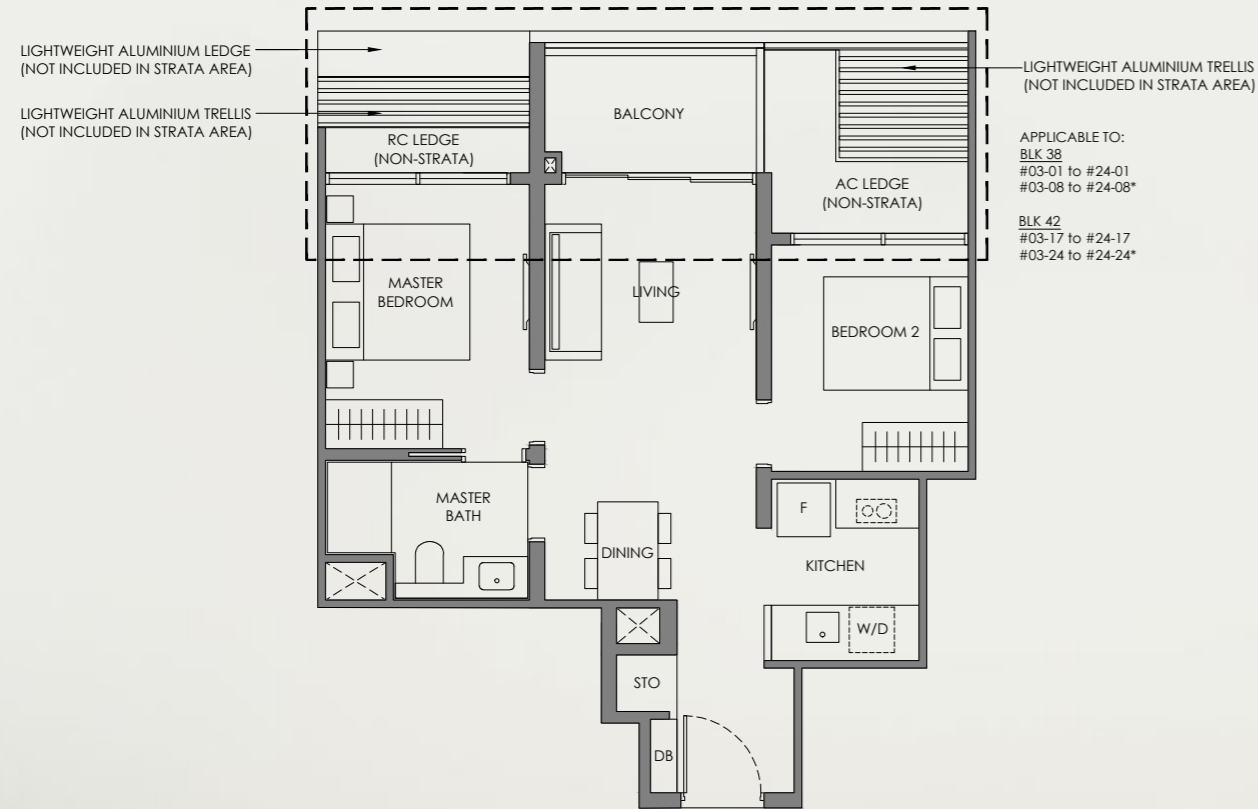


# 2 Bedroom Premium

Type BP-1

65 sqm / 700 sqft

BLK 40  
#02-09 to #24-09\*  
#02-16 to #24-16



Legend (Where Applicable):

- F - Fridge
- W/D - Washer cum Dryer
- DB - Distribution Board
- WC - Water Closet
- HS - Household Shelter
- PR - Powder Room
- WI - Wine Chiller
- STO - Store
- DM - Display Module
- WPD - Water Purifier & Dispenser
- DW - Dish Washer
- \*Mirror Image

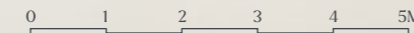
- Wall not allowed to be hacked or altered (including by way of drilling)
- Services void space (excluded from strata area)
- Rainwater downpipe shaft space (excluded from strata area)

DISCLAIMER: Area includes balcony where applicable, and excludes among others, the air-conditioner (AC) ledge and RC - Reinforced Concrete Ledge. Please refer to the key plan for orientation. All floor plans are approximate measurements only and are subject to government re-survey. The balcony shall not be enclosed unless with the approved balcony screen. The cost of screen and installation shall be borne by the Purchaser.

Scan For Facade Catalogue



Applicable to:  
BLK 38 BLK 42  
#02-01 #02-17  
#02-08\* #02-24\*



Legend (Where Applicable):

- F - Fridge
- W/D - Washer cum Dryer
- DB - Distribution Board
- WC - Water Closet
- HS - Household Shelter
- PR - Powder Room
- WI - Wine Chiller
- STO - Store
- DM - Display Module
- WPD - Water Purifier & Dispenser
- DW - Dish Washer
- \*Mirror Image

- Wall not allowed to be hacked or altered (including by way of drilling)
- Services void space (excluded from strata area)
- Rainwater downpipe shaft space (excluded from strata area)

DISCLAIMER: Area includes balcony where applicable, and excludes among others, the air-conditioner (AC) ledge and RC - Reinforced Concrete Ledge. Please refer to the key plan for orientation. All floor plans are approximate measurements only and are subject to government re-survey. The balcony shall not be enclosed unless with the approved balcony screen. The cost of screen and installation shall be borne by the Purchaser.

Scan For Facade Catalogue



Applicable to:  
BLK 40  
#02-09\*  
#02-16

# 2 Bedroom Premium

Type BP-2  
65 sqm / 700 sqft

BLK 40  
#02-12 to #24-12

BLK 42  
#02-21 to #24-21\*



Keyplan is not drawn to scale

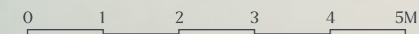
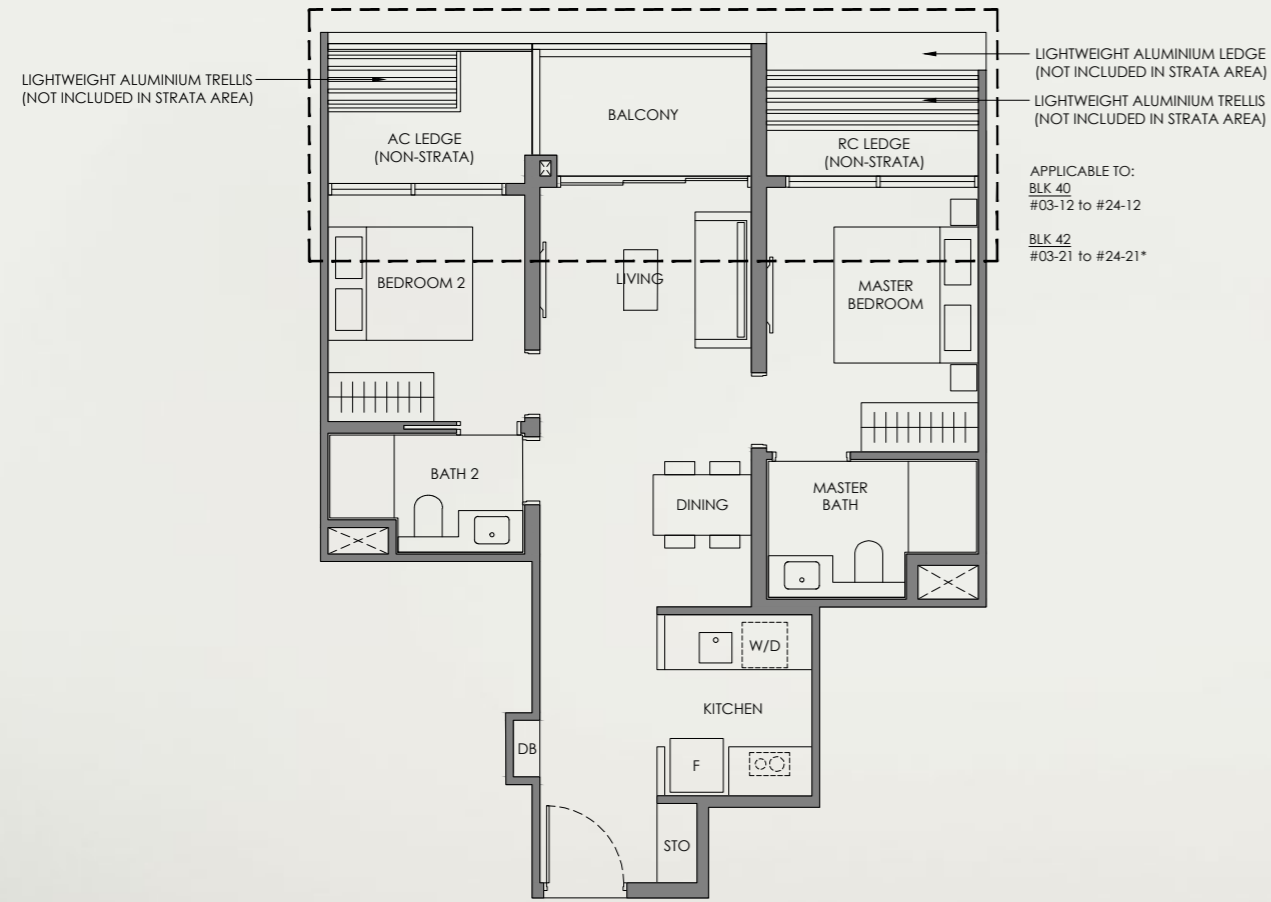
# 2 Bedroom + Study

Type BS  
73 sqm / 786 sqft

BLK 38  
#02-04 to #24-04  
#02-05 to #24-05\*



Keyplan is not drawn to scale



Legend (Where Applicable):

- F - Fridge
- W/D - Washer cum Dryer
- DB - Distribution Board
- WC - Water Closet
- HS - Household Shelter
- PR - Powder Room
- WI - Wine Chiller
- STO - Store
- DM - Display Module
- WPD - Water Purifier & Dispenser
- DW - Dish Washer
- \*Mirror Image

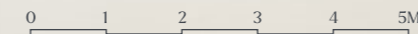
- Wall not allowed to be hacked or altered (including by way of drilling)
- Services void space (excluded from strata area)
- Rainwater downpipe shaft space (excluded from strata area)

DISCLAIMER: Area includes balcony where applicable, and excludes among others, the air-conditioner (AC) ledge and RC - Reinforced Concrete Ledge. Please refer to the key plan for orientation. All floor plans are approximate measurements only and are subject to government re-survey. The balcony shall not be enclosed unless with the approved balcony screen. The cost of screen and installation shall be borne by the Purchaser.

Scan For Facade Catalogue



Applicable to:  
BLK 40 BLK 42  
#02-12 #02-21\*



Legend (Where Applicable):

- F - Fridge
- W/D - Washer cum Dryer
- DB - Distribution Board
- WC - Water Closet
- HS - Household Shelter
- PR - Powder Room
- WI - Wine Chiller
- STO - Store
- DM - Display Module
- WPD - Water Purifier & Dispenser
- DW - Dish Washer
- \*Mirror Image

- Wall not allowed to be hacked or altered (including by way of drilling)
- Services void space (excluded from strata area)
- Rainwater downpipe shaft space (excluded from strata area)

DISCLAIMER: Area includes balcony where applicable, and excludes among others, the air-conditioner (AC) ledge and RC - Reinforced Concrete Ledge. Please refer to the key plan for orientation. All floor plans are approximate measurements only and are subject to government re-survey. The balcony shall not be enclosed unless with the approved balcony screen. The cost of screen and installation shall be borne by the Purchaser.

Scan For Facade Catalogue



Applicable to:  
BLK 38  
#02-04  
#02-05 to #24-05\*



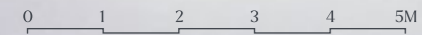




# 3 Bedroom Premium

Type CP-4  
103 sqm / 1109 sqft

BLK 40  
#02-10 to #24-10



**Legend (Where Applicable):**

- F - Fridge
- W/D - Washer cum Dryer
- DB - Distribution Board
- WC - Water Closet
- HS - Household Shelter
- PR - Powder Room
- WI - Wine Chiller
- STO - Store
- DM - Display Module
- WPD - Water Purifier & Dispenser
- DW - Dish Washer
- \*Mirror Image

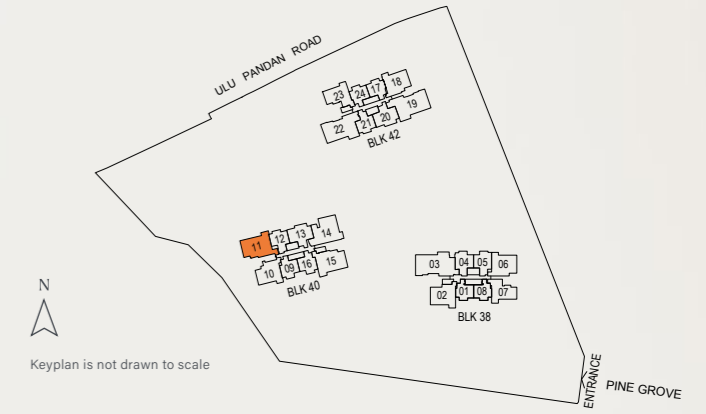
- Wall not allowed to be hacked or altered (including by way of drilling)
- Services void space (excluded from strata area)
- Rainwater downpipe shaft space (excluded from strata area)

DISCLAIMER: Area includes balcony where applicable, and excludes among others, the air-conditioner (AC) ledge and RC - Reinforced Concrete Ledge. Please refer to the key plan for orientation. All floor plans are approximate measurements only and are subject to government re-survey. The balcony shall not be enclosed unless with the approved balcony screen. The cost of screen and installation shall be borne by the Purchaser.

# 4 Bedroom

Type D-1  
124 sqm / 1335 sqft

BLK 40  
#02-11 to #24-11



**Legend (Where Applicable):**

- F - Fridge
- W/D - Washer cum Dryer
- DB - Distribution Board
- WC - Water Closet
- HS - Household Shelter
- PR - Powder Room
- WI - Wine Chiller
- STO - Store
- DM - Display Module
- WPD - Water Purifier & Dispenser
- DW - Dish Washer
- \*Mirror Image

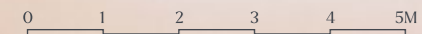
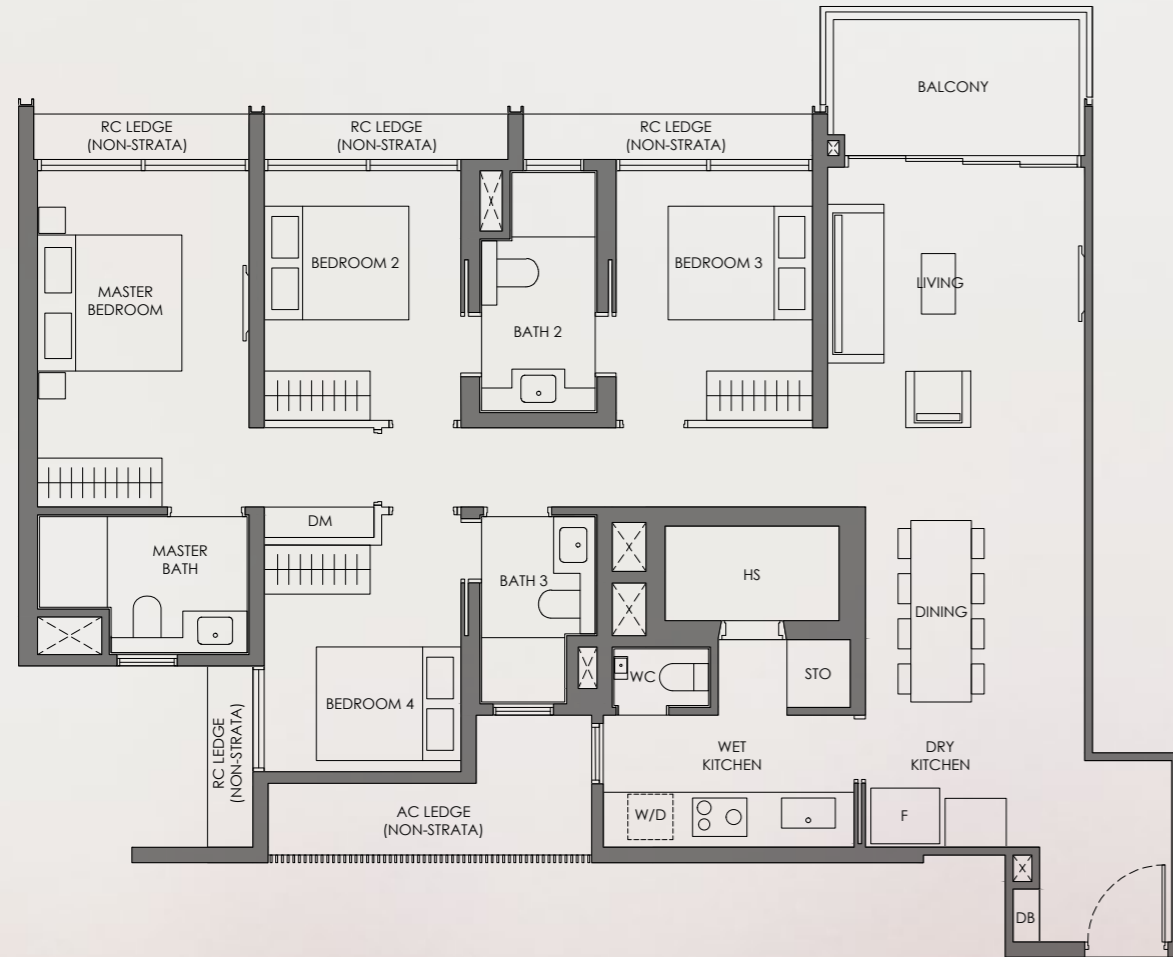
- Wall not allowed to be hacked or altered (including by way of drilling)
- Services void space (excluded from strata area)
- Rainwater downpipe shaft space (excluded from strata area)

DISCLAIMER: Area includes balcony where applicable, and excludes among others, the air-conditioner (AC) ledge and RC - Reinforced Concrete Ledge. Please refer to the key plan for orientation. All floor plans are approximate measurements only and are subject to government re-survey. The balcony shall not be enclosed unless with the approved balcony screen. The cost of screen and installation shall be borne by the Purchaser.

# 4 Bedroom

Type D-2  
124 sqm / 1335 sqft

BLK 40  
#02-15 to #24-15



- Legend (Where Applicable):**
- F - Fridge
  - W/D - Washer cum Dryer
  - DB - Distribution Board
  - WC - Water Closet
  - HS - Household Shelter
  - PR - Powder Room
  - WI - Wine Chiller
  - STO - Store
  - DM - Display Module
  - WPD - Water Purifier & Dispenser
  - DW - Dish Washer
  - \*Mirror Image

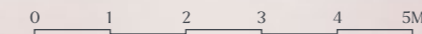
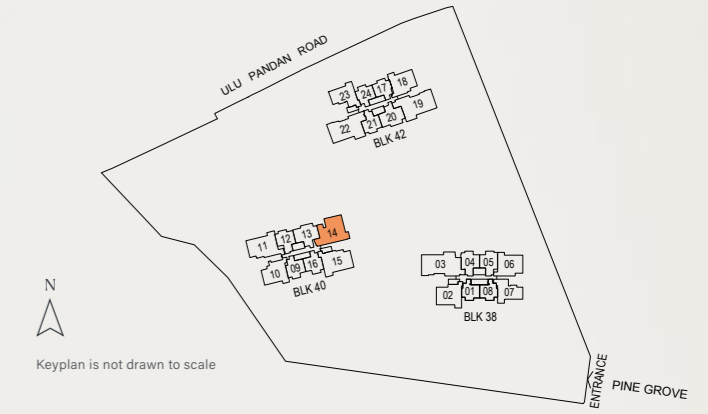
- Wall not allowed to be hacked or altered (including by way of drilling)
- Services void space (excluded from strata area)
- Rainwater downpipe shaft space (excluded from strata area)

**DISCLAIMER:** Area includes balcony where applicable, and excludes among others, the air-conditioner (AC) ledge and RC - Reinforced Concrete Ledge. Please refer to the key plan for orientation. All floor plans are approximate measurements only and are subject to government re-survey. The balcony shall not be enclosed unless with the approved balcony screen. The cost of screen and installation shall be borne by the Purchaser.

# 4 Bedroom Dual-Key

Type DK  
136 sqm / 1464 sqft

BLK 40  
#02-14 to #24-14



- Legend (Where Applicable):**
- F - Fridge
  - W/D - Washer cum Dryer
  - DB - Distribution Board
  - WC - Water Closet
  - HS - Household Shelter
  - PR - Powder Room
  - WI - Wine Chiller
  - STO - Store
  - DM - Display Module
  - WPD - Water Purifier & Dispenser
  - DW - Dish Washer
  - \*Mirror Image

- Wall not allowed to be hacked or altered (including by way of drilling)
- Services void space (excluded from strata area)
- Rainwater downpipe shaft space (excluded from strata area)

**DISCLAIMER:** Area includes balcony where applicable, and excludes among others, the air-conditioner (AC) ledge and RC - Reinforced Concrete Ledge. Please refer to the key plan for orientation. All floor plans are approximate measurements only and are subject to government re-survey. The balcony shall not be enclosed unless with the approved balcony screen. The cost of screen and installation shall be borne by the Purchaser.

# 4 Bedroom Premium + Private Lift

Type DP-1  
144 sqm / 1550 sqft

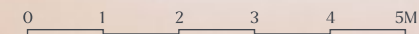
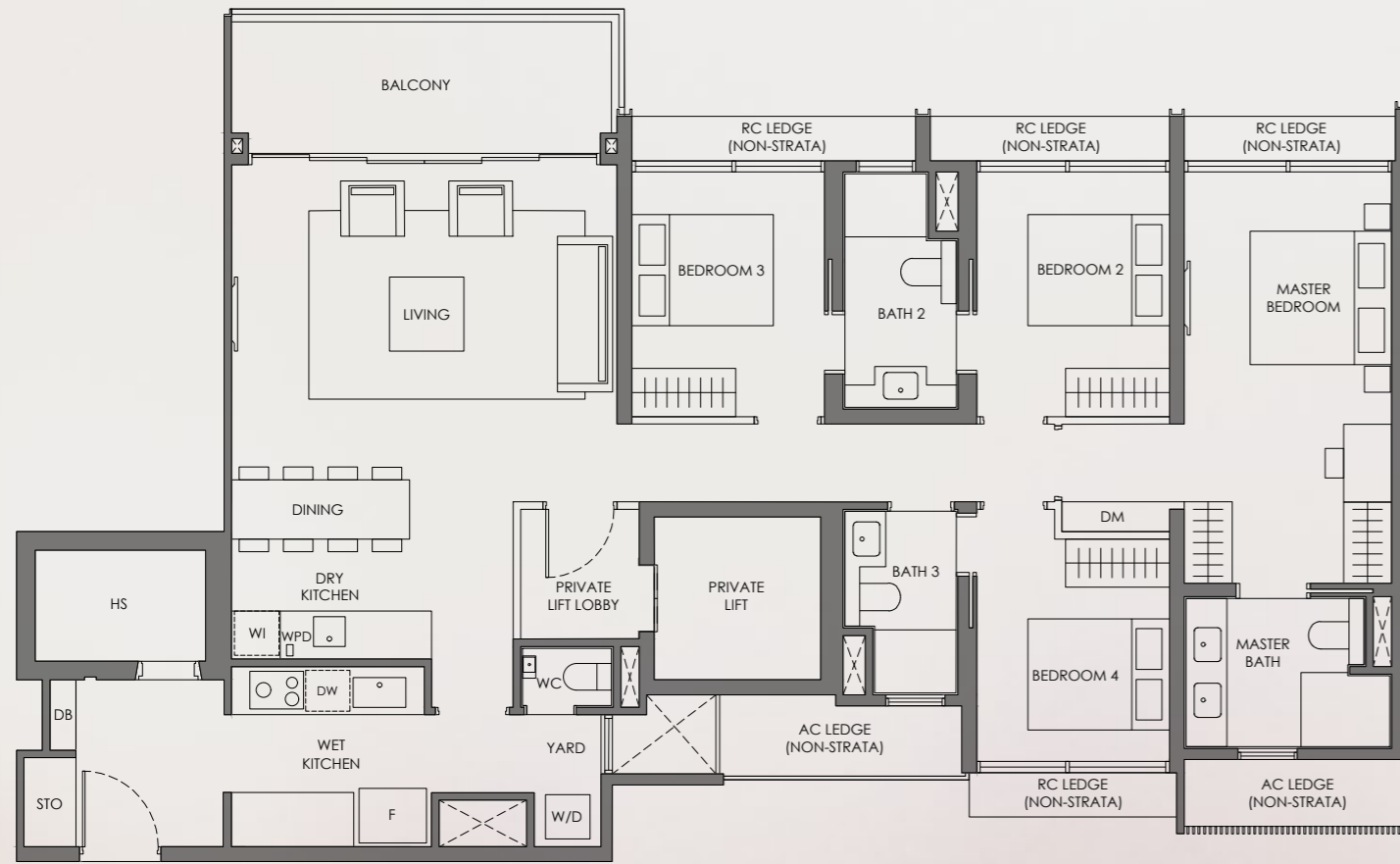
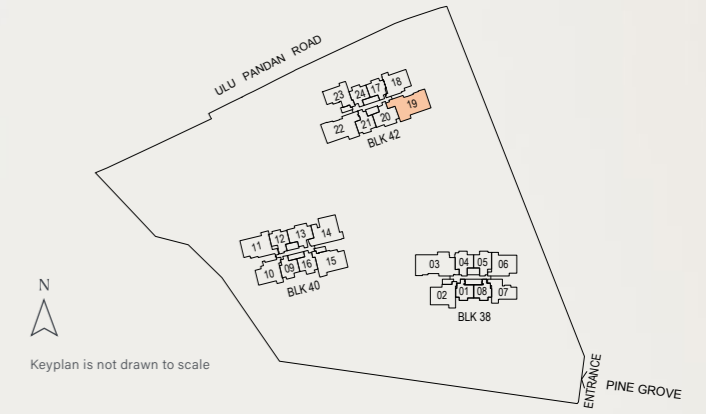
BLK 42  
#02-22 to #24-22



# 4 Bedroom Premium + Private Lift

Type DP-2  
144 sqm / 1550 sqft

BLK 42  
#02-19 to #24-19

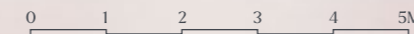
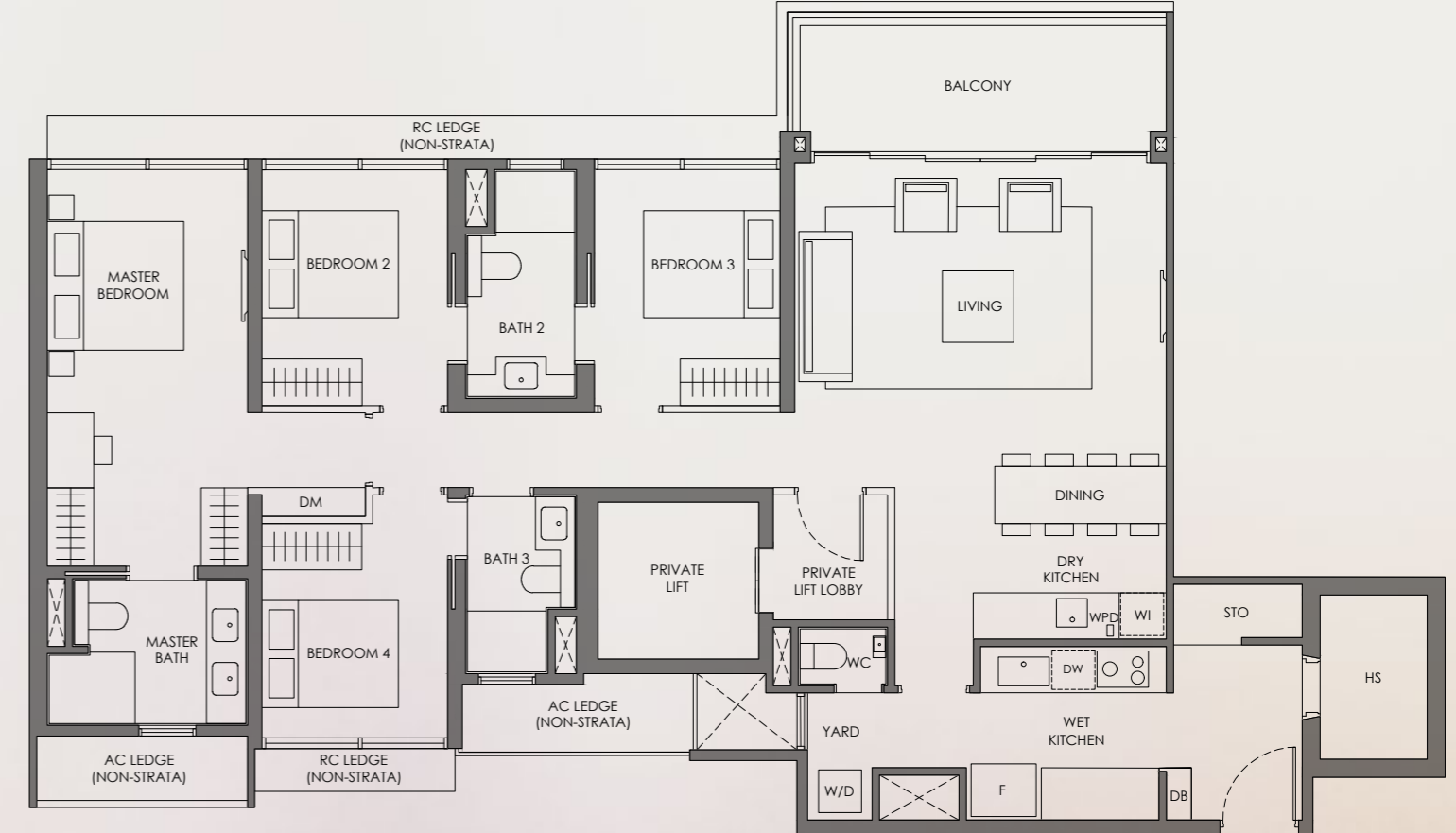


**Legend (Where Applicable):**

- F - Fridge
- W/D - Washer cum Dryer
- DB - Distribution Board
- WC - Water Closet
- HS - Household Shelter
- PR - Powder Room
- WI - Wine Chiller
- STO - Store
- DM - Display Module
- WPD - Water Purifier & Dispenser
- DW - Dish Washer
- \*Mirror Image

- Wall not allowed to be hacked or altered (including by way of drilling)
- Services void space (excluded from strata area)
- Rainwater downpipe shaft space (excluded from strata area)

DISCLAIMER: Area includes balcony where applicable, and excludes among others, the air-conditioner (AC) ledge and RC - Reinforced Concrete Ledge. Please refer to the key plan for orientation. All floor plans are approximate measurements only and are subject to government re-survey. The balcony shall not be enclosed unless with the approved balcony screen. The cost of screen and installation shall be borne by the Purchaser.



**Legend (Where Applicable):**

- F - Fridge
- W/D - Washer cum Dryer
- DB - Distribution Board
- WC - Water Closet
- HS - Household Shelter
- PR - Powder Room
- WI - Wine Chiller
- STO - Store
- DM - Display Module
- WPD - Water Purifier & Dispenser
- DW - Dish Washer
- \*Mirror Image

- Wall not allowed to be hacked or altered (including by way of drilling)
- Services void space (excluded from strata area)
- Rainwater downpipe shaft space (excluded from strata area)

DISCLAIMER: Area includes balcony where applicable, and excludes among others, the air-conditioner (AC) ledge and RC - Reinforced Concrete Ledge. Please refer to the key plan for orientation. All floor plans are approximate measurements only and are subject to government re-survey. The balcony shall not be enclosed unless with the approved balcony screen. The cost of screen and installation shall be borne by the Purchaser.



