



REVEL IN
REFINED
STYLE

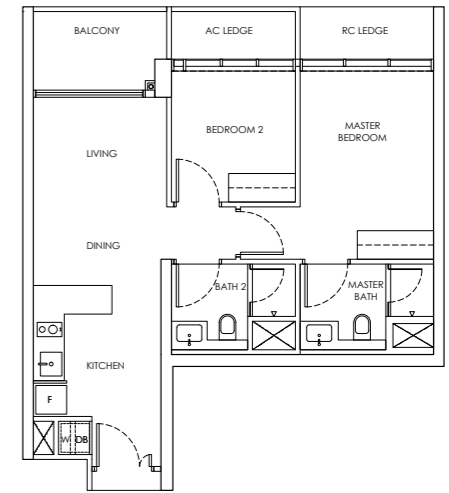
For Illustration Purposes

2-BEDROOM

Type B1 / B1-m

Area: 65 sqm

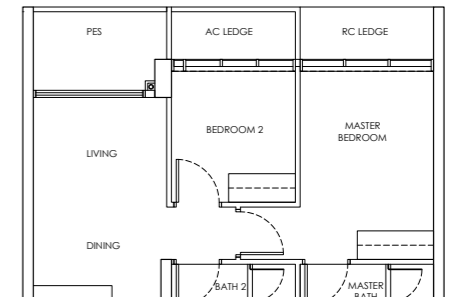
Blk 242 #02-09 to #21-09
Blk 246 #02-27 to #21-27
Blk 248 #02-36 to #18-36
Blk 244 #02-10 to #21-10* (Mirror)
Blk 250 #02-37 to #18-37* (Mirror)



Type B1-P / B1-m-P

Area: 65 sqm

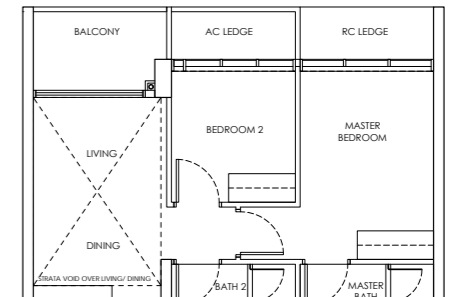
Blk 242 #01-09
Blk 246 #01-27
Blk 248 #01-36
Blk 244 #01-10* (Mirror)
Blk 250 #01-37* (Mirror)



Type B1-U / B1-m-U

Area: 77 sqm

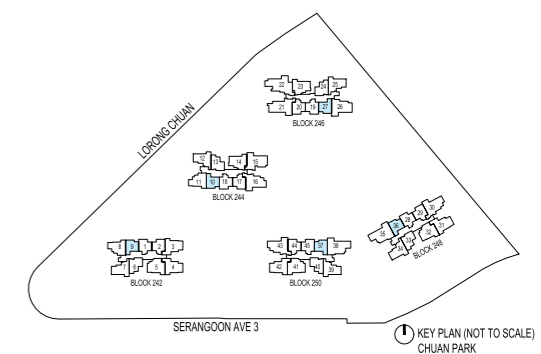
Blk 242 #22-09
Blk 246 #22-27
Blk 248 #19-36
Blk 244 #22-10* (Mirror)
Blk 250 #19-37* (Mirror)



LEGEND

- DB: Distribution Board
- AC LEDGE: Air-Conditioner Ledge
- F: Fridge
- W: Washer cum dryer machine
- ⊠: Non-Strata Area (Void)

Area includes AC ledge, balcony/ PES and Strata Void over Living/ Dining space.
RC ledge and non- strata void are excluded from the strata area

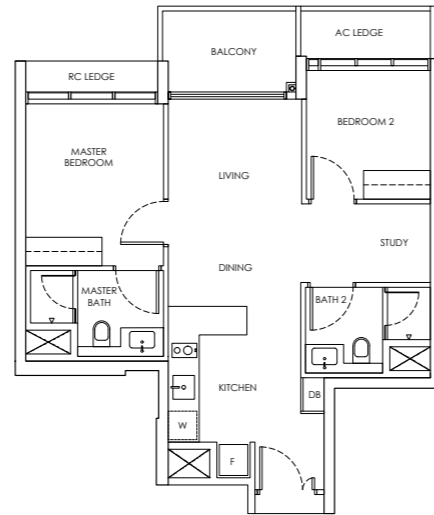


2-BEDROOM + STUDY

Type B2 / B2-m

Area: 68 sqm

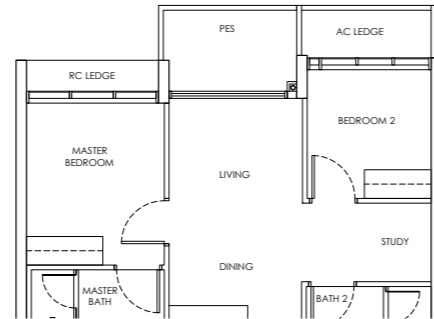
- Blk 242 #04-02 to #21-02
- Blk 244 #02-18 to #21-18
- Blk 246 #04-20 to #21-20
- Blk 248 #03-29 to #18-29
- Blk 250 #02-45 to #18-45
- Blk 242 #02-01 to #21-01* (Mirror)
- Blk 244 #04-17 to #21-17* (Mirror)
- Blk 246 #02-19 to #21-19* (Mirror)
- Blk 248 #02-28 to #18-28* (Mirror)
- Blk 250 #03-44 to #18-44* (Mirror)



Type B2-P / B2-m-P

Area: 68 sqm

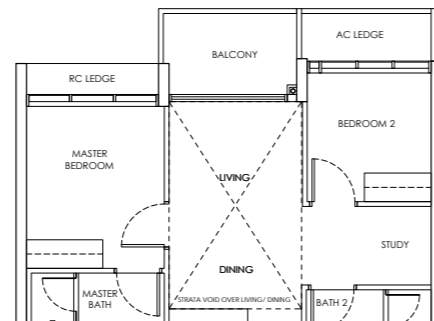
- Blk 244 #01-18
- Blk 250 #01-45
- Blk 242 #01-01* (Mirror)
- Blk 246 #01-19* (Mirror)
- Blk 248 #01-28* (Mirror)



Type B2-U / B2-m-U

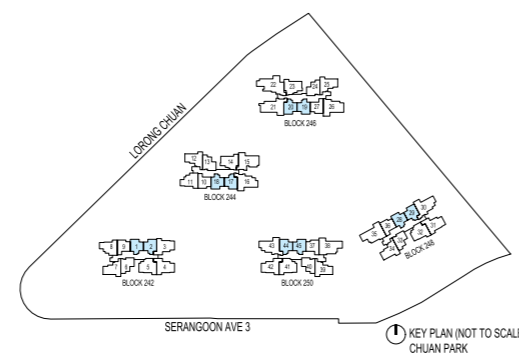
Area: 81 sqm

- Blk 242 #22-02
- Blk 244 #22-18
- Blk 246 #22-20
- Blk 248 #19-29
- Blk 250 #19-45
- Blk 242 #22-01* (Mirror)
- Blk 244 #22-17* (Mirror)
- Blk 246 #22-19* (Mirror)
- Blk 248 #19-28* (Mirror)
- Blk 250 #19-44* (Mirror)



- LEGEND
- DB: Distribution Board
 - AC LEDGE: Air-Conditioner Ledge
 - F: Fridge
 - W: Washer cum dryer machine
 - ⊠: Non-Strata Area (Void)

Area includes AC ledge, balcony/ PES and Strata Void over Living/ Dining space.
RC ledge and non- strata void are excluded from the strata area



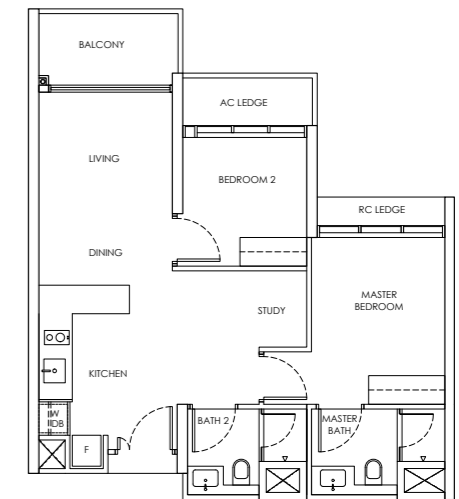
KEY PLAN (NOT TO SCALE)
CHUAN PARK

2-BEDROOM + STUDY

Type B2a / B2a-m

Area: 69 sqm

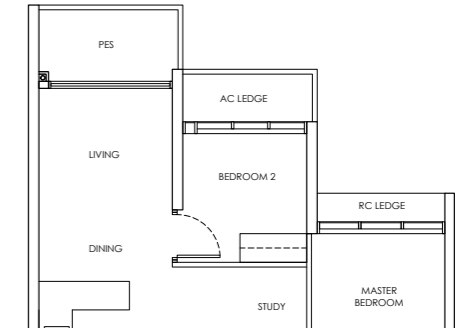
- Blk 244 #02-13 to #21-13
- Blk 250 #02-40 to #18-40
- Blk 242 #02-06 to #21-06* (Mirror)
- Blk 246 #02-24 to #21-24* (Mirror)
- Blk 248 #02-33 to #18-33* (Mirror)



Type B2a-P / B2a-m-P

Area: 69 sqm

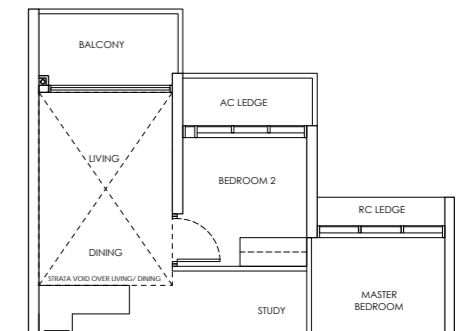
- Blk 244 #01-13
- Blk 250 #01-40
- Blk 242 #01-06* (Mirror)
- Blk 246 #01-24* (Mirror)
- Blk 248 #01-33* (Mirror)



Type B2a-U / B2a-m-U

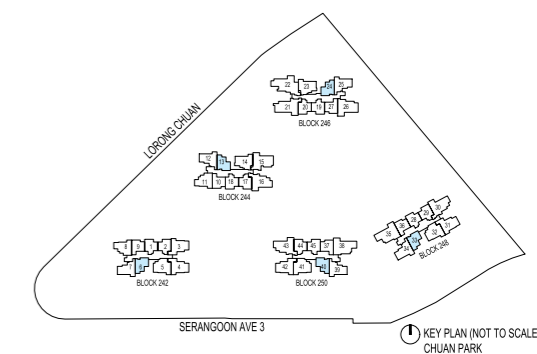
Area: 82 sqm

- Blk 244 #22-13
- Blk 250 #19-40
- Blk 242 #22-06* (Mirror)
- Blk 246 #22-24* (Mirror)
- Blk 248 #19-33* (Mirror)



- LEGEND
- DB: Distribution Board
 - AC LEDGE: Air-Conditioner Ledge
 - F: Fridge
 - W: Washer cum dryer machine
 - ⊠: Non-Strata Area (Void)

Area includes AC ledge, balcony/ PES and Strata Void over Living/ Dining space.
RC ledge and non- strata void are excluded from the strata area



KEY PLAN (NOT TO SCALE)
CHUAN PARK



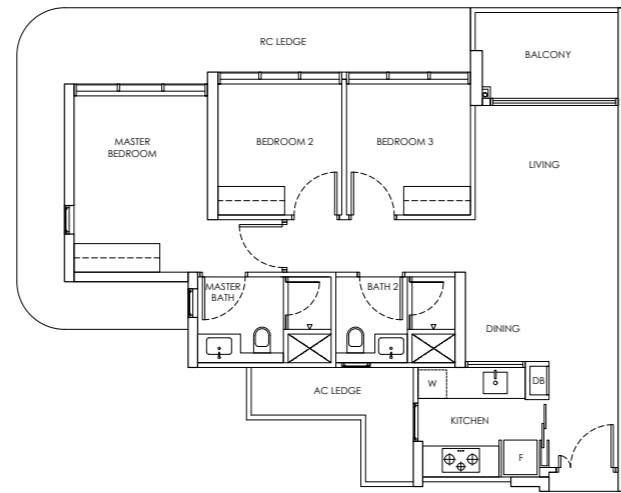
A
FEAST
FOR THE
EYES

3-BEDROOM

Type C1 / C1-m

Area: 85 sqm

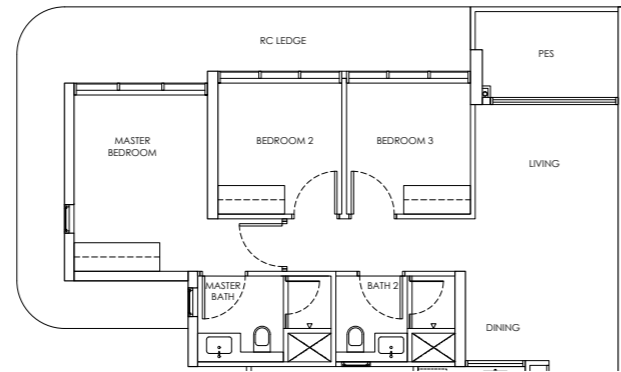
Blk 242 #02-08 to #21-08
Blk 244 #02-11 to #21-11* (Mirror)



Type C1-P / C1-m-P

Area: 85 sqm

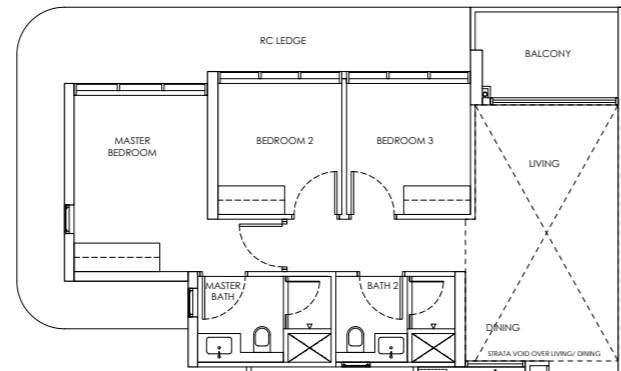
Blk 242 #01-08
Blk 244 #01-11* (Mirror)



Type C1-U / C1-m-U

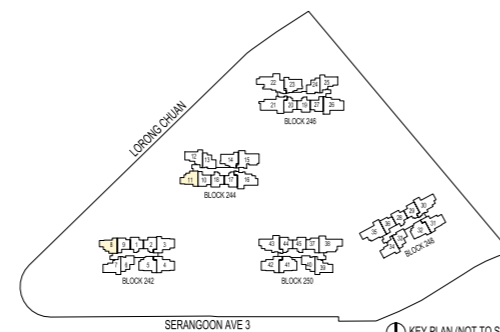
Area: 103 sqm

Blk 242 #22-08
Blk 244 #22-11* (Mirror)



- LEGEND
- DB: Distribution Board
 - AC LEDGE: Air-Conditioner Ledge
 - F: Fridge
 - W: Washer cum dryer machine
 - ⊠: Non-Strata Area (Void)

Area includes AC ledge, balcony/ PES and Strata Void over Living/ Dining space.
RC ledge and non- strata void are excluded from the strata area



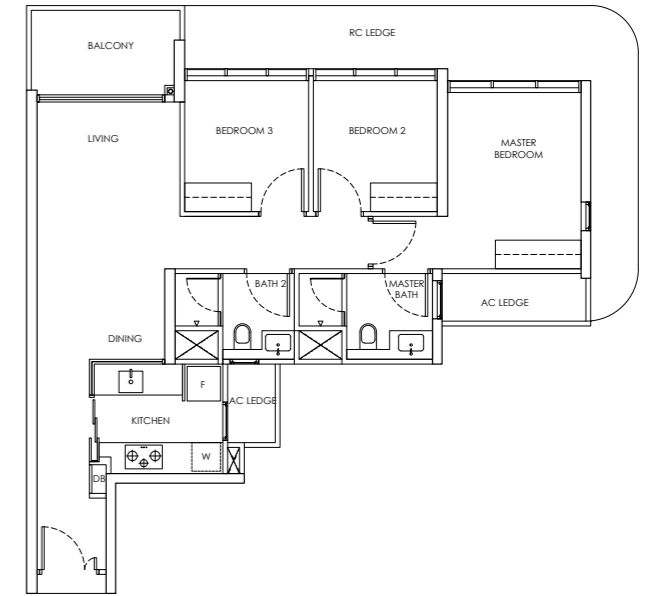
KEY PLAN (NOT TO SCALE)
CHUAN PARK

3-BEDROOM

Type C1a / C1a-m

Area: 87 sqm

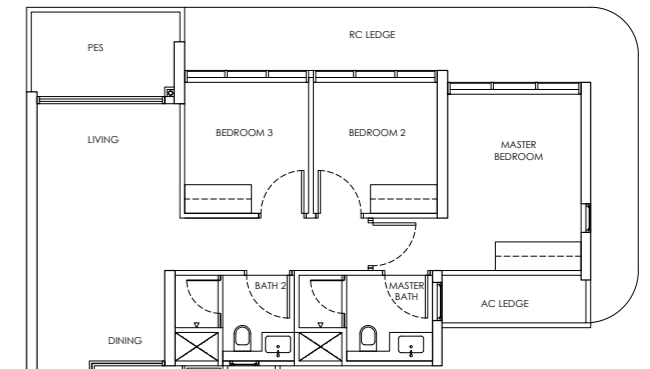
Blk 242 #02-07 to #21-07
Blk 246 #02-25 to #21-25
Blk 248 #02-34 to #18-34
Blk 244 #02-12 to #21-12* (Mirror)
Blk 250 #02-39 to #18-39* (Mirror)



Type C1a-P / C1a-m-P

Area: 87 sqm

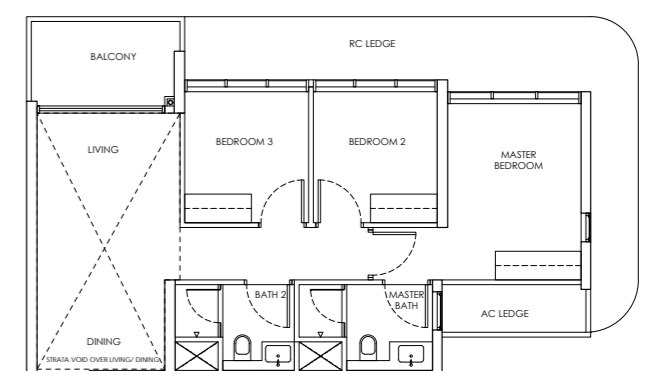
Blk 242 #01-07
Blk 246 #01-25
Blk 248 #01-34
Blk 244 #01-12* (Mirror)
Blk 250 #01-39* (Mirror)



Type C1a-U / C1a-m-U

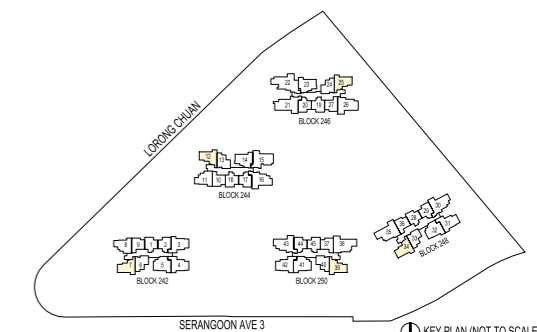
Area: 104 sqm

Blk 242 #22-07
Blk 246 #22-25
Blk 248 #19-34
Blk 244 #22-12* (Mirror)
Blk 250 #19-39* (Mirror)



- LEGEND
- DB: Distribution Board
 - AC LEDGE: Air-Conditioner Ledge
 - F: Fridge
 - W: Washer cum dryer machine
 - ⊠: Non-Strata Area (Void)

Area includes AC ledge, balcony/ PES and Strata Void over Living/ Dining space.
RC ledge and non- strata void are excluded from the strata area



KEY PLAN (NOT TO SCALE)
CHUAN PARK

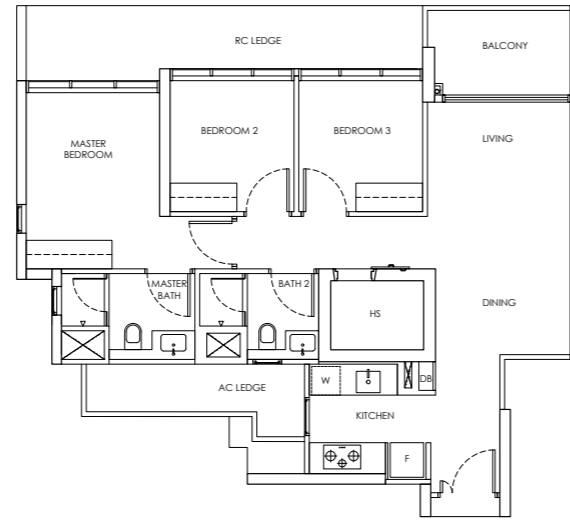
3-BEDROOM

Type C1b / C1b-m

Area: 89 sqm

Blk 244 #02-14 to #21-14

Blk 246 #02-23 to #21-23* (Mirror)

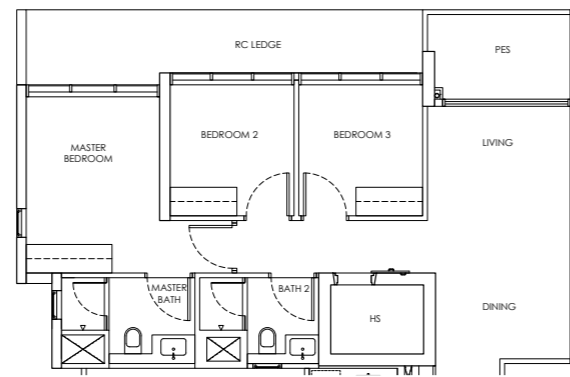


Type C1b-P / C1b-m-P

Area: 89 sqm

Blk 244 #01-14

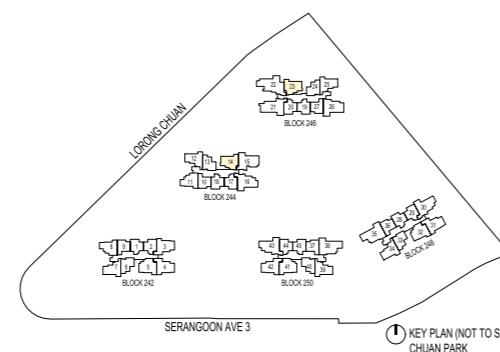
Blk 246 #01-23* (Mirror)



LEGEND

- DB: Distribution Board
- AC LEDGE: Air-Conditioner Ledge
- F: Fridge
- W: Washer cum dryer machine
- ⊠: Non-Strata Area (Void)

Area includes AC ledge, balcony/ PES and Strata Void over Living/ Dining space.
RC ledge and non- strata void are excluded from the strata area



3-BEDROOM

Type C2 / C2-M

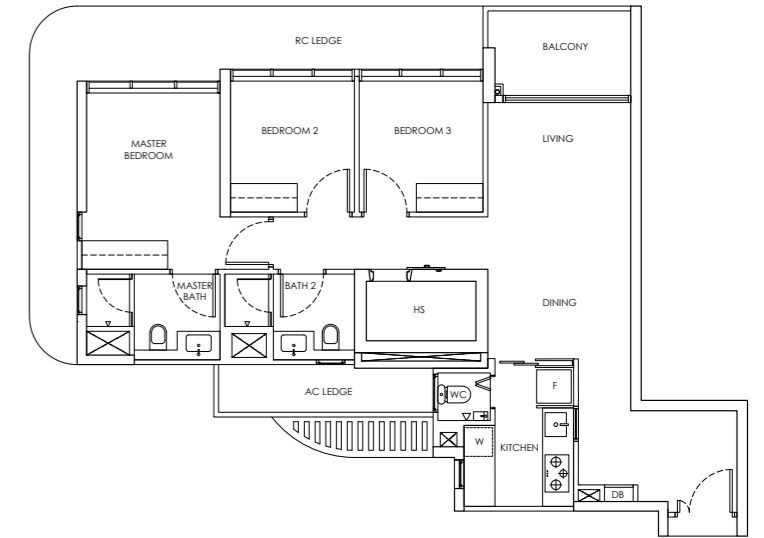
Area: 95 sqm

Blk 242 #02-04 to #21-04

Blk 248 #02-31 to #18-31

Blk 242 #02-03 to #21-03* (Mirror)

Blk 250 #02-42 to #18-42* (Mirror)



Type C2-P / C2-m-P

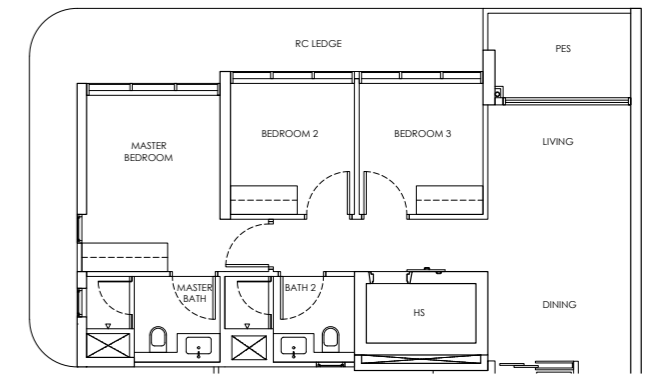
Area: 95 sqm

Blk 242 #01-04

Blk 248 #01-31

Blk 242 #01-03* (Mirror)

Blk 250 #01-42* (Mirror)

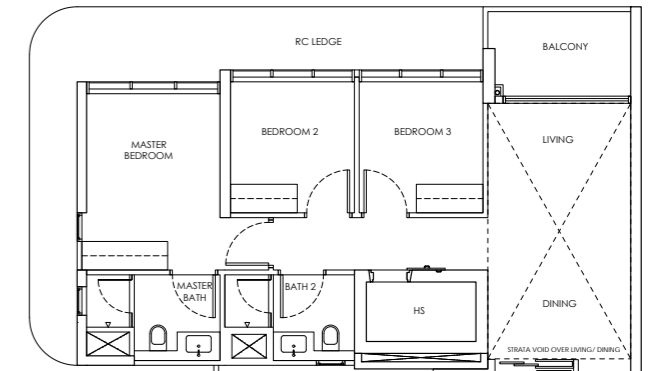


Type C2-U / C2-m-U

Area: 112 sqm

Blk 242 #22-04

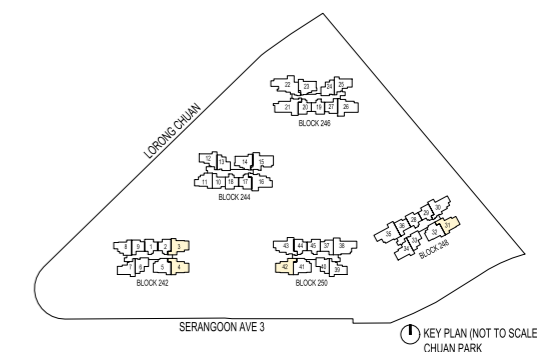
Blk 242 #22-03* (Mirror)



LEGEND

- DB: Distribution Board
- AC LEDGE: Air-Conditioner Ledge
- F: Fridge
- W: Washer cum dryer machine
- ⊠: Non-Strata Area (Void)

Area includes AC ledge, balcony/ PES and Strata Void over Living/ Dining space.
RC ledge and non- strata void are excluded from the strata area



3-BEDROOM

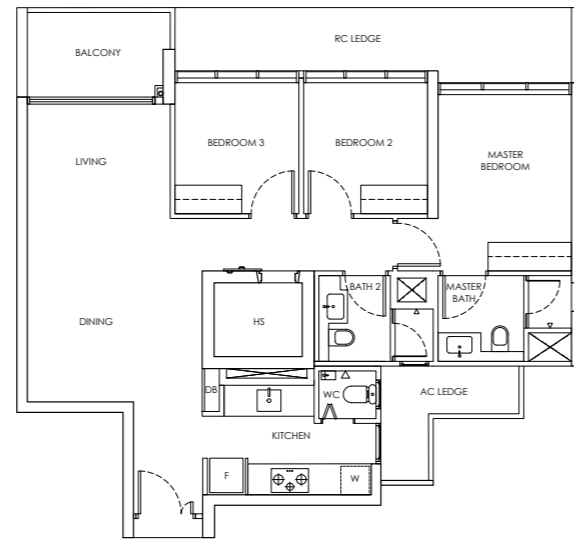
Type C2a / C2a-m

Area: 96 sqm

Blk 242 #02-05 to #21-05

Blk 248 #02-32 to #18-32

Blk 250 #02-41 to #18-41* (Mirror)



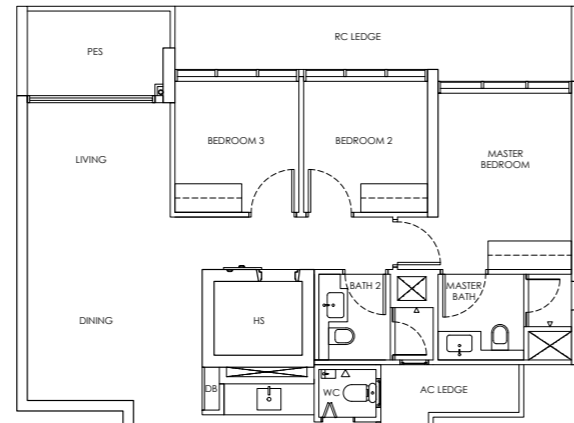
Type C2a-P / C2a-m-P

Area: 96 sqm

Blk 242 #01-05

Blk 248 #01-32

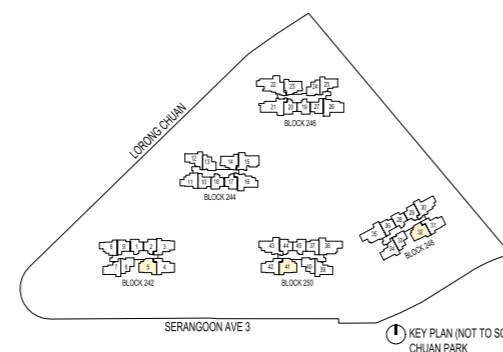
Blk 250 #01-41* (Mirror)



LEGEND

- DB: Distribution Board
- AC LEDGE: Air-Conditioner Ledge
- F: Fridge
- W: Washer cum dryer machine
- ⊠: Non-Strata Area (Void)

Area includes AC ledge, balcony/ PES and Strata Void over Living/ Dining space.
RC ledge and non-strata void are excluded from the strata area



KEY PLAN (NOT TO SCALE)
CHUAN PARK

3-BEDROOM

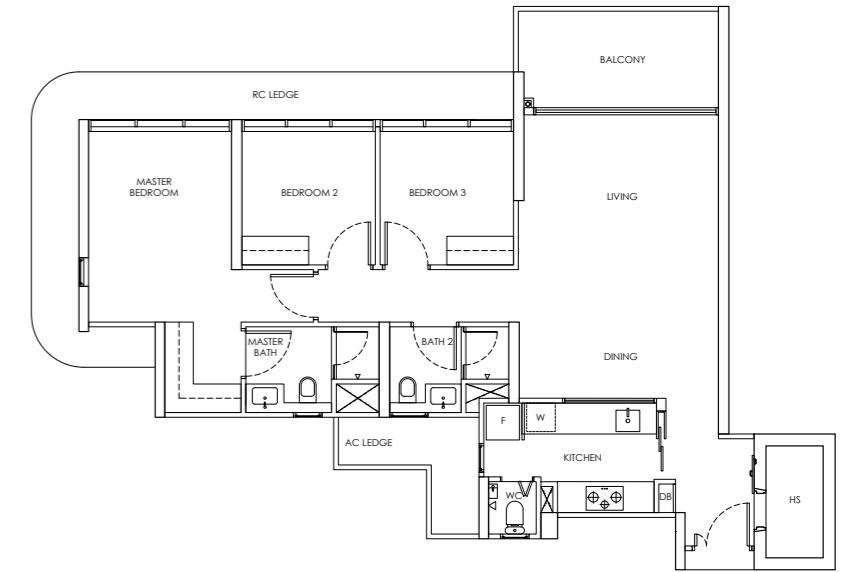
Type C3 / C3-m

Area: 112 sqm

Blk 244 #02-16 to #21-16

Blk 250 #02-43 to #18-43

Blk 248 #02-30 to #18-30* (Mirror)



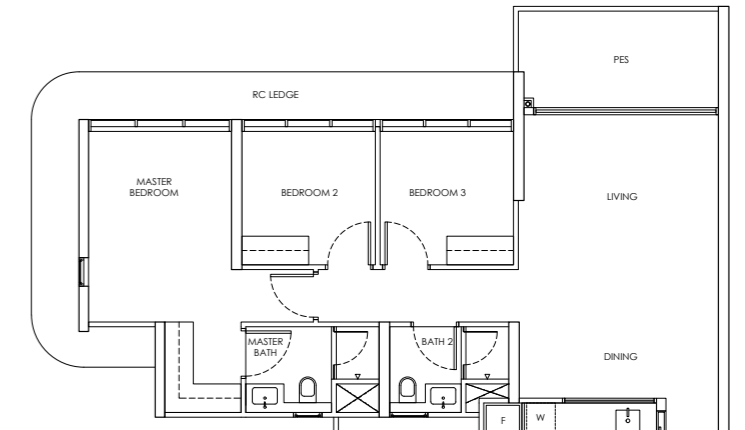
Type C3-P / C3-m-P

Area: 112 sqm

Blk 244 #01-16

Blk 250 #01-43

Blk 248 #01-30* (Mirror)



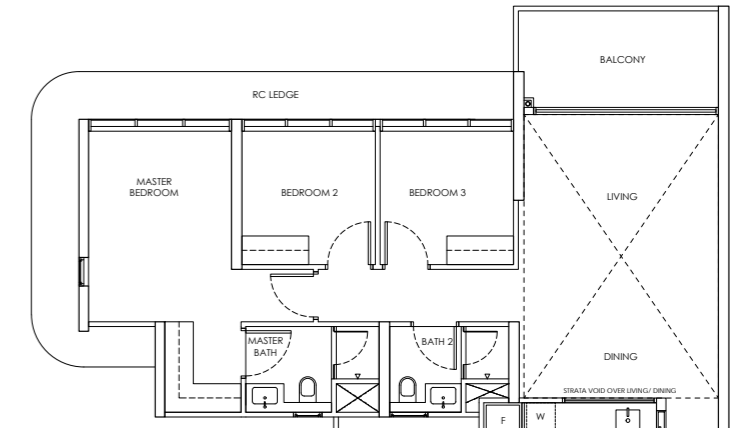
Type C3-U / C3-m-U

Area: 138 sqm

Blk 244 #22-16

Blk 250 #19-43

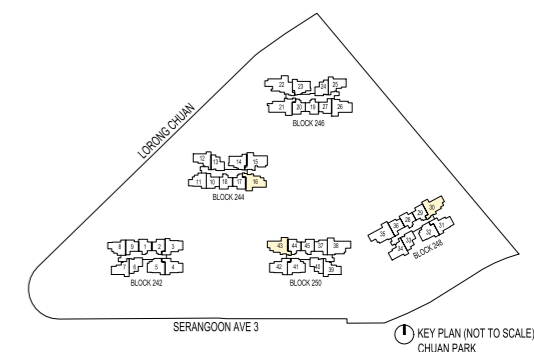
Blk 248 #19-30* (Mirror)



LEGEND

- DB: Distribution Board
- AC LEDGE: Air-Conditioner Ledge
- F: Fridge
- W: Washer cum dryer machine
- ⊠: Non-Strata Area (Void)

Area includes AC ledge, balcony/ PES and Strata Void over Living/ Dining space.
RC ledge and non-strata void are excluded from the strata area



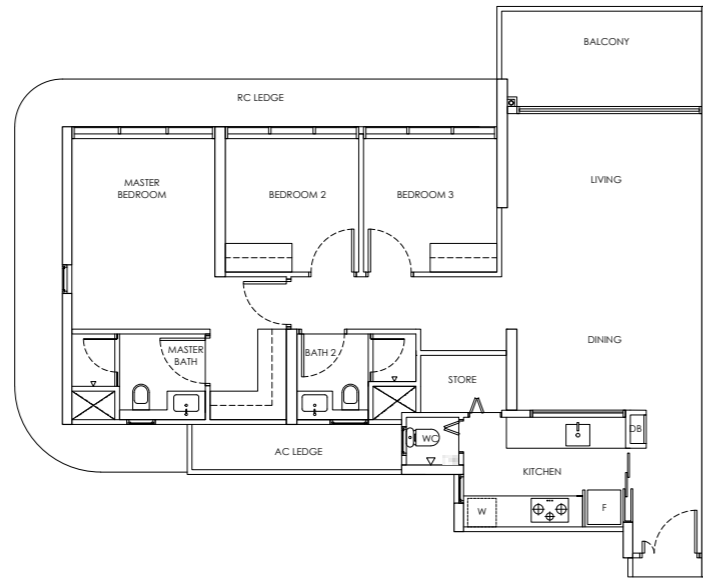
KEY PLAN (NOT TO SCALE)
CHUAN PARK

3-BEDROOM

Type C3a

Area: 112 sqm

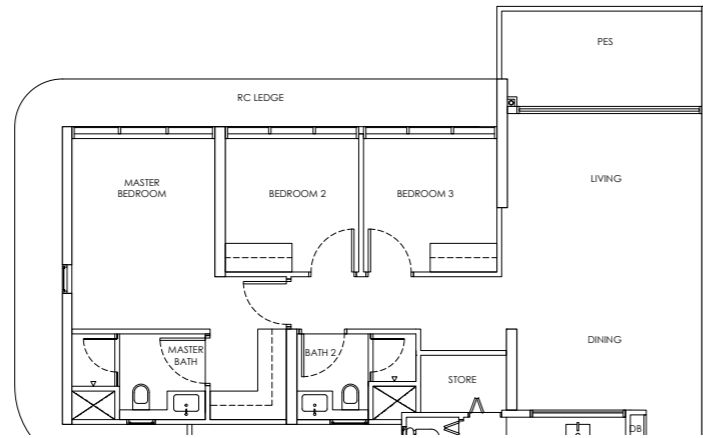
Blk 246 #02-26 to #21-26



Type C3a-P

Area: 112 sqm

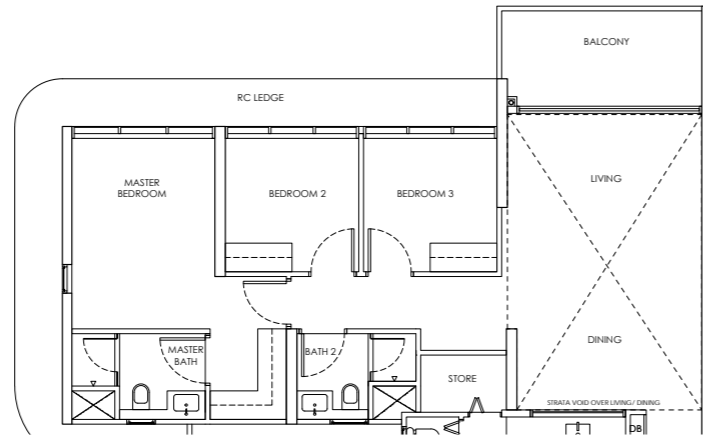
Blk 246 #01-26



Type C3a-U

Area: 139 sqm

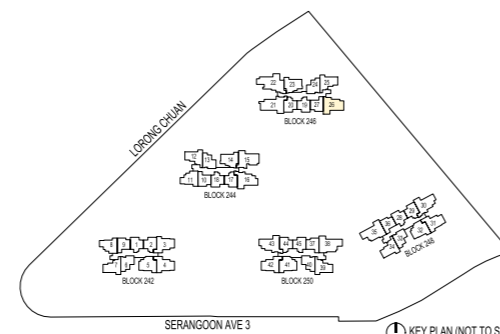
Blk 246 #22-26



LEGEND

- DB: Distribution Board
- AC LEDGE: Air-Conditioner Ledge
- F: Fridge
- W: Washer cum dryer machine
- ⊠: Non-Strata Area (Void)

Area includes AC ledge, balcony/ PES and Strata Void over Living/ Dining space.
RC ledge and non- strata void are excluded from the strata area



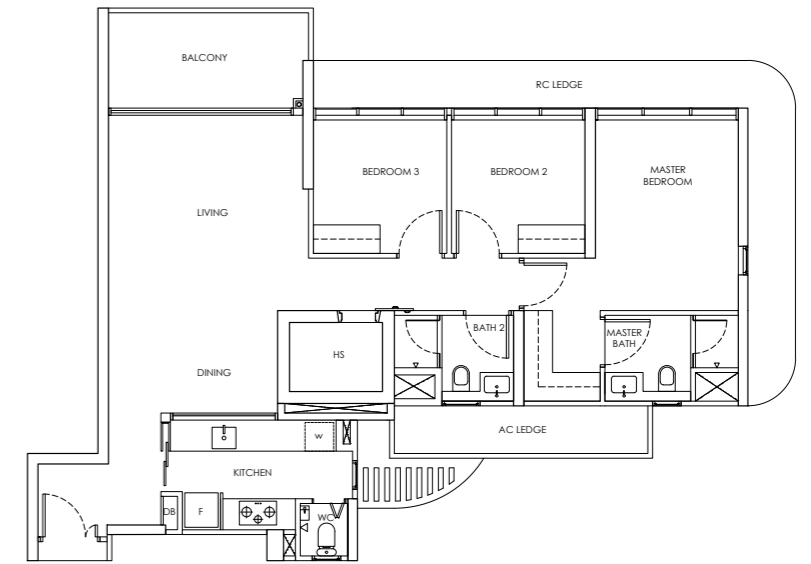
KEY PLAN (NOT TO SCALE)
CHUAN PARK

3-BEDROOM

Type C3b

Area: 114 sqm

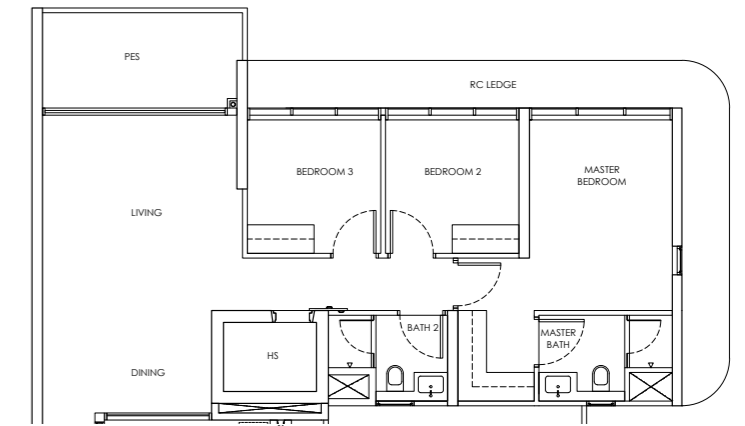
Blk 244 #02-15 to #21-15



Type C3b-P

Area: 114 sqm

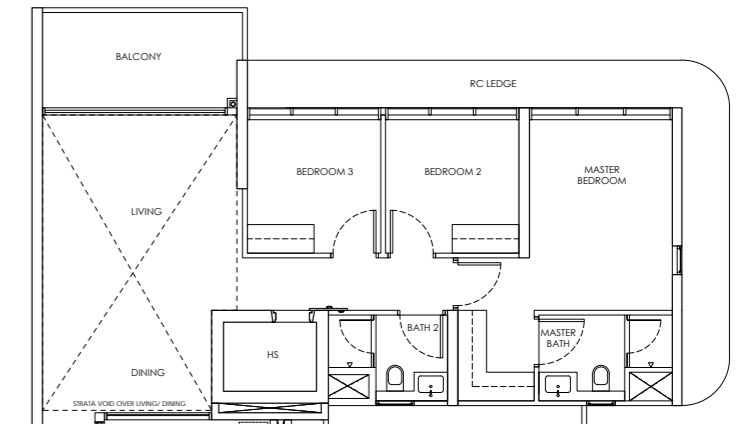
Blk 244 #01-15



Type C3b-U

Area: 140 sqm

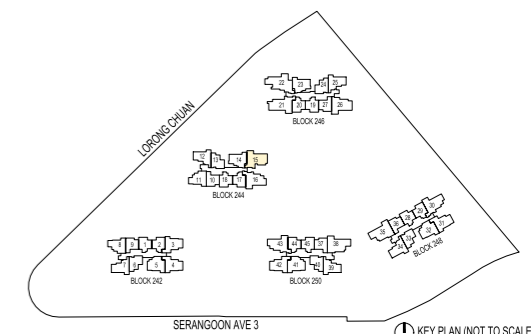
Blk 244 #22-15



LEGEND

- DB: Distribution Board
- AC LEDGE: Air-Conditioner Ledge
- F: Fridge
- W: Washer cum dryer machine
- ⊠: Non-Strata Area (Void)

Area includes AC ledge, balcony/ PES and Strata Void over Living/ Dining space.
RC ledge and non- strata void are excluded from the strata area



KEY PLAN (NOT TO SCALE)
CHUAN PARK

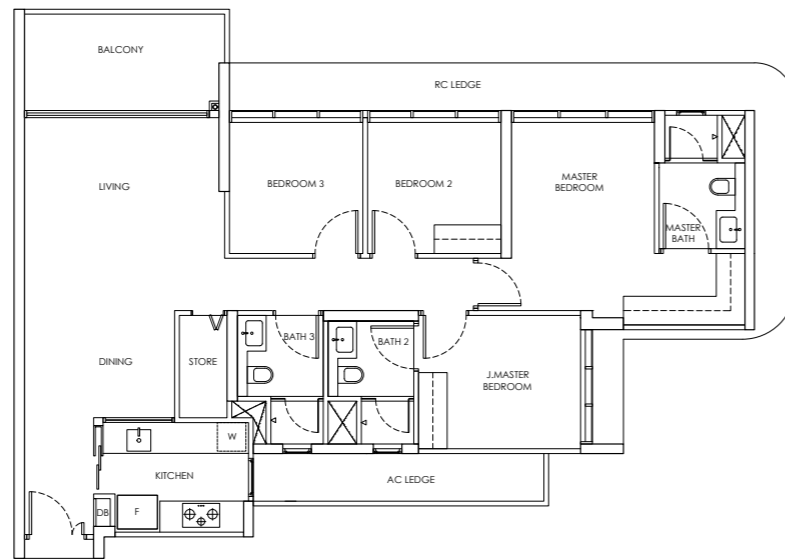


YOUR
PERSONAL
HAVEN
OF PURE
CALM

4-BEDROOM

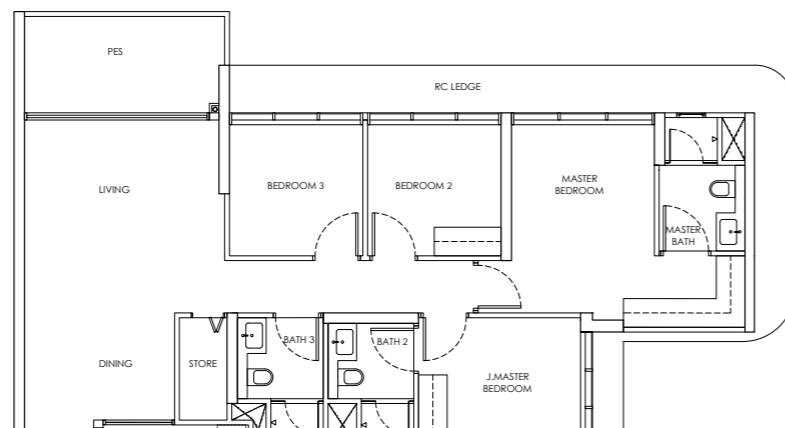
Type D1 / D1-m

Area: 124 sqm
 Blk 250 #02-38 to #18-38
 Blk 248 #02-35 to #18-35* (Mirror)



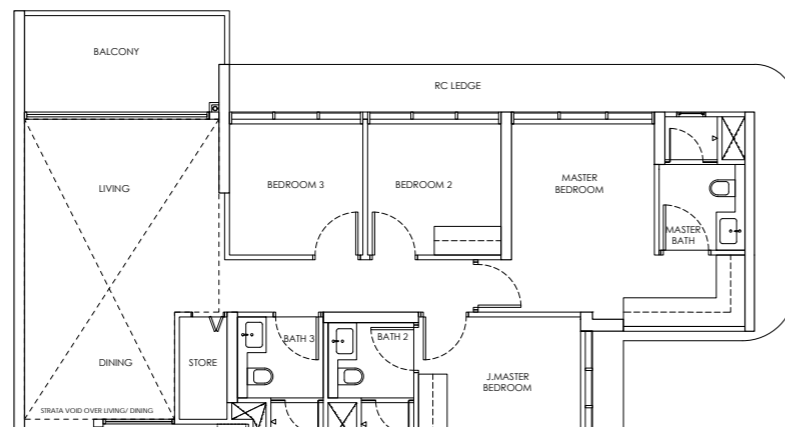
Type D1-P / D1-m-P

Area: 124 sqm
 Blk 250 #01-38
 Blk 248 #01-35* (Mirror)



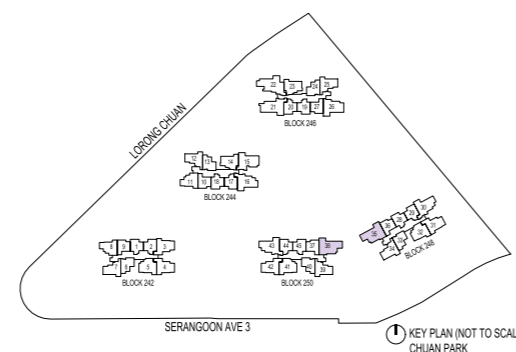
Type D1-U / D1-m-U

Area: 150 sqm
 Blk 250 #19-38
 Blk 248 #19-35* (Mirror)



- LEGEND
- DB: Distribution Board
 - AC LEDGE: Air-Conditioner Ledge
 - F: Fridge
 - W: Washer cum dryer machine
 - ⊠: Non-Strata Area (Void)

Area includes AC ledge, balcony/ PES and Strata Void over Living/ Dining space.
 RC ledge and non- strata void are excluded from the strata area

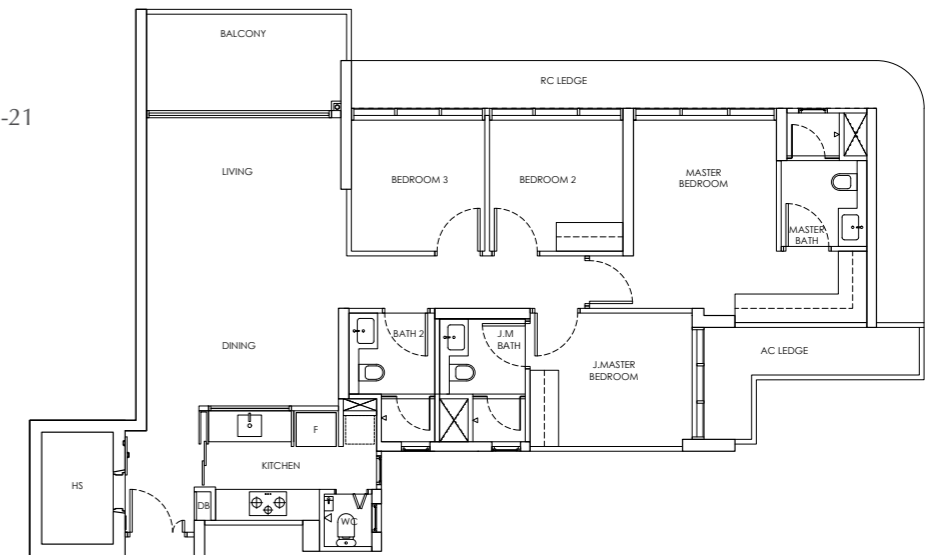


KEY PLAN (NOT TO SCALE)
 CHUAN PARK

4-BEDROOM

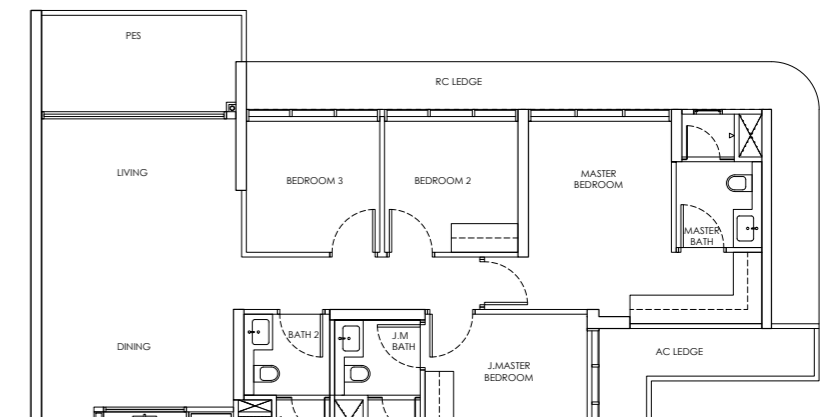
Type D2

Area: 129 sqm
 Blk 246 #02-21 to #21-21



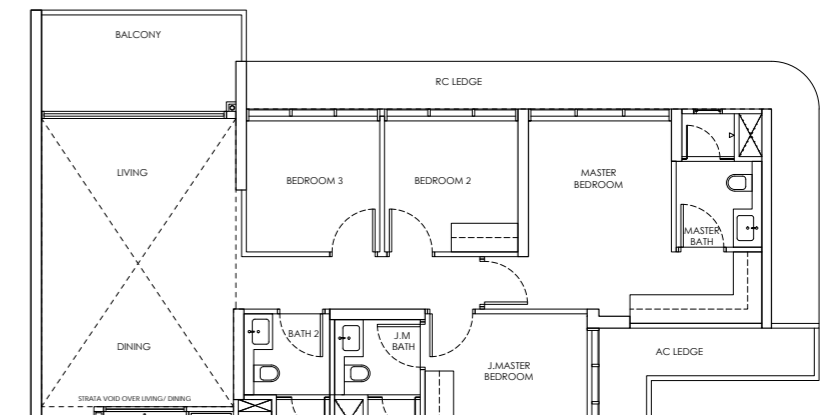
Type D2-P

Area: 129 sqm
 Blk 246 #01-21



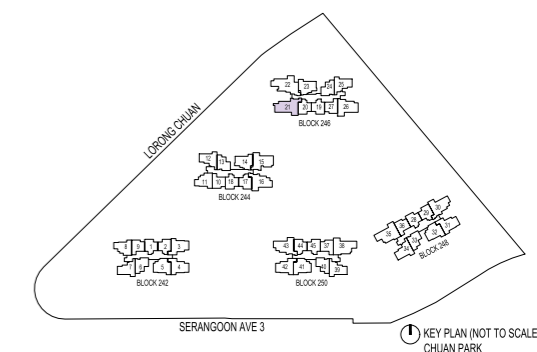
Type D2-U

Area: 156 sqm
 Blk 246 #22-21



- LEGEND
- DB: Distribution Board
 - AC LEDGE: Air-Conditioner Ledge
 - F: Fridge
 - W: Washer cum dryer machine
 - ⊠: Non-Strata Area (Void)

Area includes AC ledge, balcony/ PES and Strata Void over Living/ Dining space.
 RC ledge and non- strata void are excluded from the strata area



KEY PLAN (NOT TO SCALE)
 CHUAN PARK

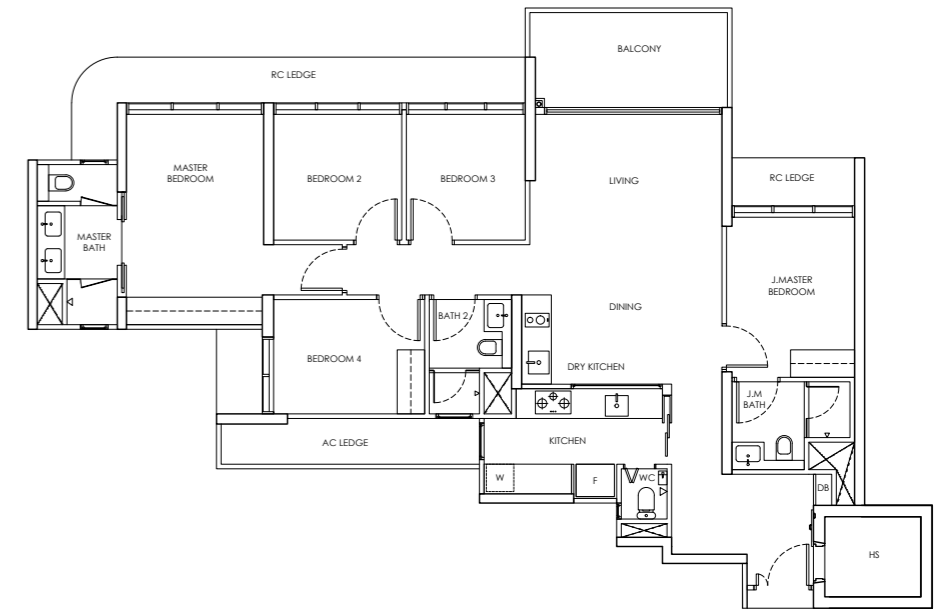


BESPOKE
SPACES FOR
BELOVED
MOMENTS

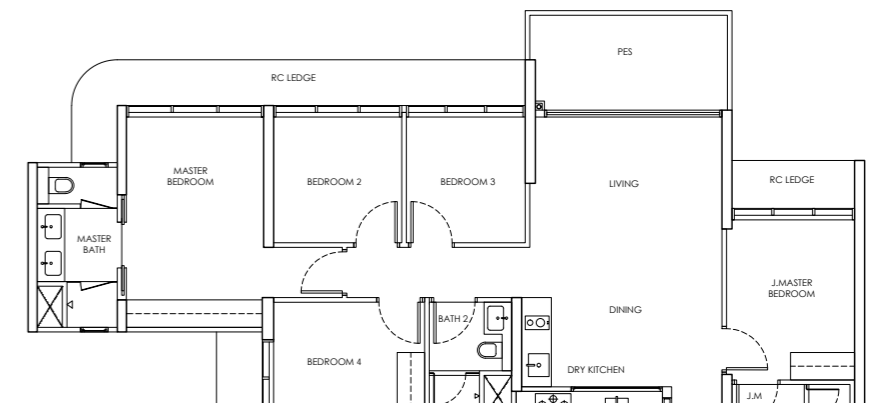
For Illustration Purposes

5-BEDROOM

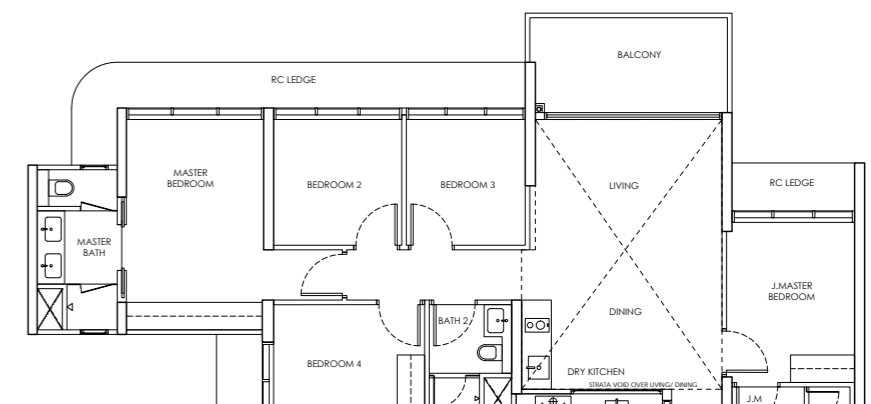
Type E1
Area: 144 sqm
Blk 246 #02-22 to #21-22



Type E1-P
Area: 144 sqm
Blk 246 #01-22



Type E1-U
Area: 171 sqm
Blk 246 #22-22



- LEGEND
- DB: Distribution Board
 - AC LEDGE: Air-Conditioner Ledge
 - F: Fridge
 - W: Washer cum dryer machine
 - ⊠: Non-Strata Area (Void)

Area includes AC ledge, balcony/ PES and Strata Void over Living/ Dining space.
RC ledge and non-strata void are excluded from the strata area

